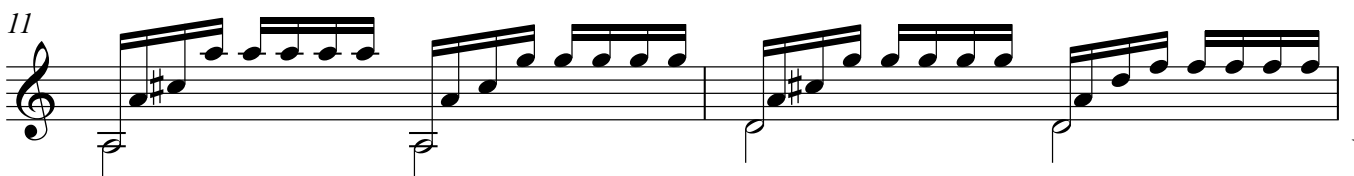
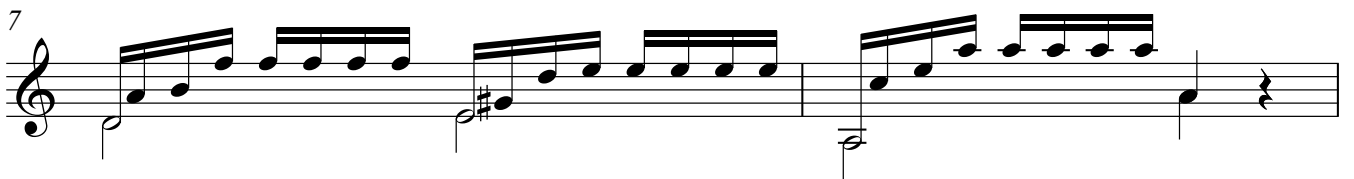
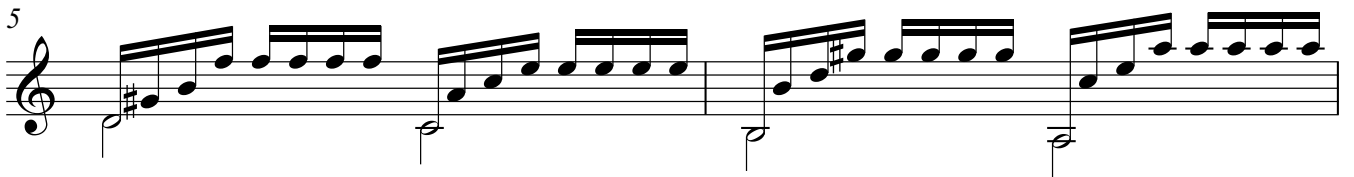
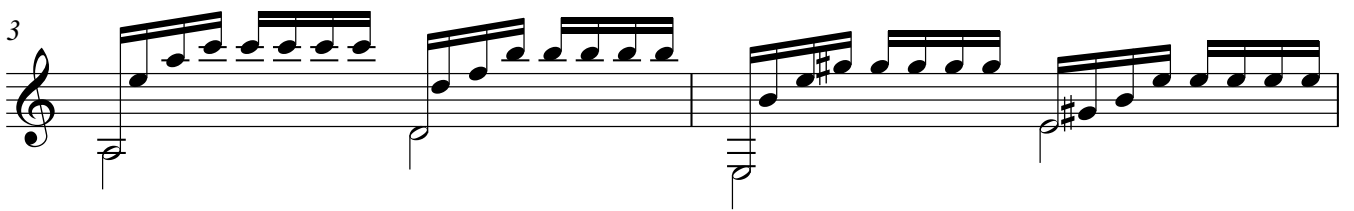
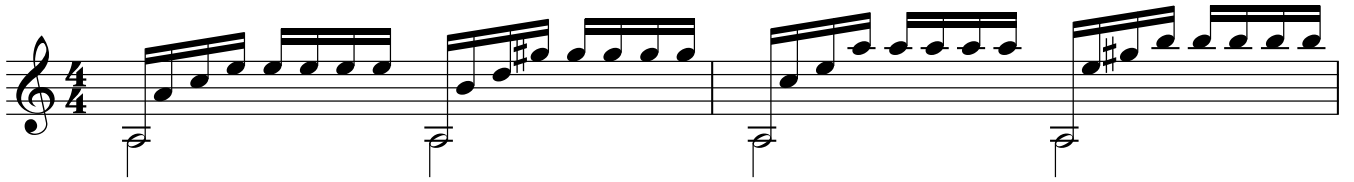


# Etude, Op.60, No.2

Moderato con espressivo

Facebook: [www.facebook.com/StevenLawCheung](http://www.facebook.com/StevenLawCheung)  
Instagram: StevenLawCheung

Matteo Carcassi  
(1792-1853)



13

Musical notation for measures 13 and 14. The piece is in treble clef with a key signature of one sharp (F#). The melody consists of eighth-note patterns, and the bass line features quarter notes. Measure 13 starts with a treble clef and a sharp sign on the first line. Measure 14 ends with a repeat sign.

15

Musical notation for measures 15 and 16. The melody continues with eighth-note patterns. Measure 15 starts with a treble clef and a sharp sign on the first line. Measure 16 ends with a repeat sign.

17

Musical notation for measures 17 and 18. The melody continues with eighth-note patterns. Measure 17 starts with a treble clef and a sharp sign on the first line. Measure 18 ends with a repeat sign.

19

Musical notation for measures 19 and 20. The melody continues with eighth-note patterns. Measure 19 starts with a treble clef and a sharp sign on the first line. Measure 20 ends with a repeat sign.

21

Musical notation for measures 21 and 22. The melody continues with eighth-note patterns. Measure 21 starts with a treble clef and a sharp sign on the first line. Measure 22 ends with a repeat sign.

23

Musical notation for measures 23 and 24. The melody continues with eighth-note patterns. Measure 23 starts with a treble clef and a sharp sign on the first line. Measure 24 ends with a repeat sign.